

# CoraLite

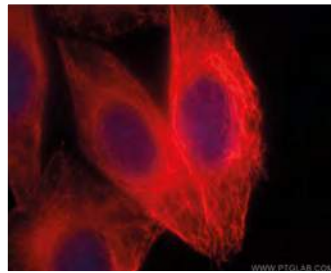
## Fluorescent-dye conjugated antibodies

For more information visit [www.ptglab.com](http://www.ptglab.com)

**Antibody Name**  
**Alpha Tubulin**  
**Catalog Number**  
**CL594-66031**

**React Species**  
**Human, Mouse,**  
**Rat, Dog**

**Applications**  
**ELISA, IF**

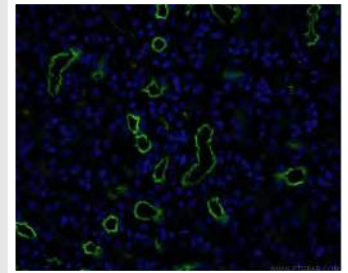


*Immunofluorescent analysis of (-20°C Ethanol) fixed HepG2 cells using CL594-66031 (alpha Tubulin antibody) at dilution of 1:100.*

**Antibody Name**  
**CD13**  
**Catalog Number**  
**CL488-66211**

**React Species**  
**Human**

**Applications**  
**ELISA, IF**

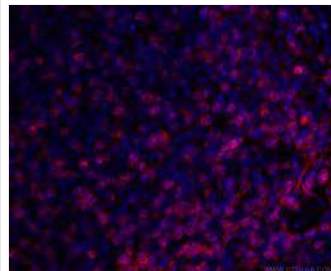


*Immunofluorescent analysis of (4% PFA) fixed mouse kidney tissue using CL488-66211 1(CD13 antibody) at dilution of 1:100.*

**Antibody Name**  
**CD3**  
**Catalog Number**  
**CL594-60181**

**React Species**  
**Human,**

**Applications**  
**ELISA, IF**



*Immunofluorescent analysis of (4% PFA) fixed human tonsillitis tissue using CL594-60181 1(CD3 antibody) at dilution of 1:100.*

**Antibody Name**  
**Cytokeratin 18**  
**Catalog Number**  
**CL488-66187**

**React Species**  
**Human**

**Applications**  
**ELISA, IF**

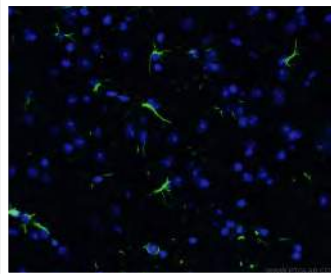


*Immunofluorescent analysis of (-20°C Ethanol) fixed HepG2 cells using CL488-66187 7(Cytokeratin 18 antibody) at dilution of 1:100.*

**Antibody Name**  
**GFAP**  
**Catalog Number**  
**CL488-60190**

**React Species**  
**Human, Mouse,**  
**Rat, Pig**

**Applications**  
**ELISA, IF**

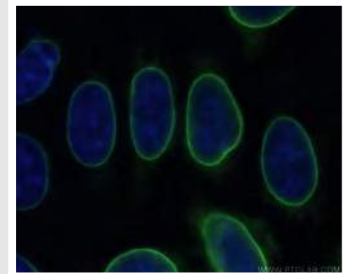


*Immunofluorescent analysis of (4% PFA) fixed mouse brain tissue using CL488-60190 0(GFAP antibody) at dilution of 1:100.*

**Antibody Name**  
**Lamin B1**  
**Catalog Number**  
**CL488-66095**

**React Species**  
**Human, Mouse,**  
**Rat**

**Applications**  
**ELISA, IF**

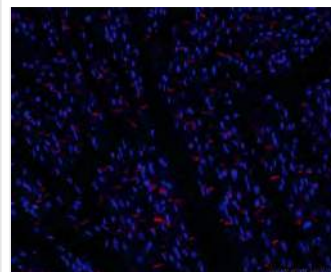


*Immunofluorescent analysis of (-20°C Ethanol) fixed HepG2 cells using CL488-66095 5(Lamin B1 antibody) at dilution of 1:100.*

**Antibody Name**  
**N-cadherin**  
**Catalog Number**  
**CL594-66219**

**React Species**  
**Human, Pig,**  
**Mouse, Rat**

**Applications**  
**ELISA, IF**



*Immunofluorescent analysis of (4% PFA) fixed mouse heart tissue using CL594-66219 9(N-cadherin antibody) at dilution of 1:50 and N/A*

**Antibody Name**  
**Vimentin**  
**Catalog Number**  
**CL594-60330**

**React Species**  
**human, Mouse,**  
**Rat**

**Applications**  
**ELISA, IF**



*Immunofluorescent analysis of (-20°C Ethanol) fixed HepG2 cells using CL594-60330 0(Vimentin antibody) at dilution of 1:100.*

# Coralite

## Fluorescent-dye conjugated antibodies

Proteintech offers polyclonal and monoclonal primary antibodies in the most popular fluorescent conjugate forms for direct detection, avoiding the need for secondary reagents. Directly conjugated antibodies are precise and reliable tools for a broad range of research applications. Our new Coralite line of fluorescent conjugated antibodies allows faster and simultaneous detection of multiple targets in one experiment.

| Cat. No.    | Antigen Name              | Species Specificity         | Applications |
|-------------|---------------------------|-----------------------------|--------------|
| CL594-66200 | Acetylated Tubulin(Lys40) | Human, Mouse, Rat, Dog, Pig | IF, ELISA    |
| CL594-66031 | Alpha Tubulin             | Human, Mouse, Rat, Dog      | IF, ELISA    |
| CL488-66379 | Beta-Catenin              | Human, Mouse, Rat, Pig      | IF, ELISA    |
| CL488-66211 | CD13                      | Human                       | IF, ELISA    |
| CL594-66211 | CD13                      | Human                       | IF, ELISA    |
| CL488-60271 | CD20                      | Human                       | IF, ELISA    |
| CL594-66103 | CD22                      | Human                       | IF, ELISA    |
| CL594-60181 | CD3                       | Human                       | IF, ELISA    |
| CL488-66065 | CD31                      | Human                       | IF, ELISA    |
| CL488-66187 | Cytokeratin 18            | Human                       | IF, ELISA    |
| CL594-66187 | Cytokeratin 18            | Human                       | IF, ELISA    |
| CL488-60190 | GFAP                      | Human, Mouse, Rat, Pig      | IF, ELISA    |
| CL594-60190 | GFAP                      | Human, Mouse, Rat, Pig      | IF, ELISA    |
| CL594-14157 | KRAP/SSFA2                | Human, Rat, Mouse           | IF, ELISA    |
| CL488-66095 | Lamin B1                  | Human,mouse, Rat            | IF, ELISA    |
| CL594-66095 | Lamin B1                  | Human,mouse, Rat            | IF, ELISA    |
| CL488-66219 | N-cadherin                | Human, Pig, Mouse, Rat      | IF, ELISA    |
| CL594-66219 | N-cadherin                | Human, Pig, Mouse, Rat      | IF, ELISA    |
| CL488-60330 | Vimentin                  | Human, Mouse, Rat           | IF, ELISA    |
| CL594-60330 | Vimentin                  | Human, Mouse, Rat           | IF, ELISA    |